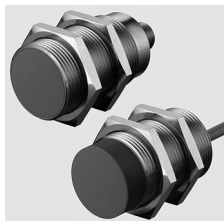
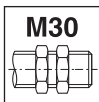
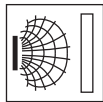


## IS 130 MM/...

## Inductive switches



10mm embedded  
16mm embedded  
15mm non-embedded  
25mm non-embedded

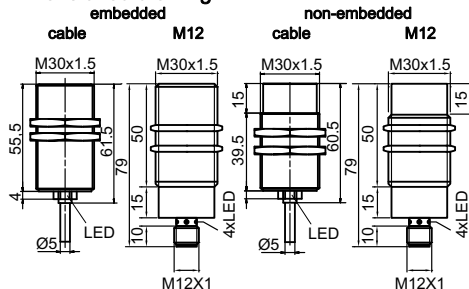


Detailed  
data sheets:

[www.leuze.com](http://www.leuze.com)



### Dimensioned drawing



### Electrical connection

#### cable, 3-wire

10-30V DC +	BR/BN
GND	BL/BU
OUT	SW/BK

#### M12 connector, 4-pole

...NO... (normally open)      ...NC... (normally closed)  
...PNC... (normally closed, PNP)

10-30V DC +	1	BR/BN
not connected	2	
GND	3	BL/BU
OUT	4	SW/BK

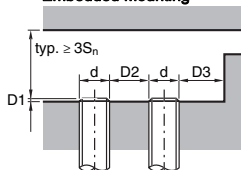
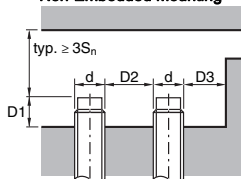
10-30V DC +	1	BR/BN
OUT	2	WS/WH
GND	3	BL/BU
not connected	4	

### Specifications

Operating voltage $U_B$	10 ... 30VDC
Output current $I_L$	$\leq 200$ mA
Switching output/function	see <b>Sensor Types</b>
Switching frequency $f$	see <b>Sensor Types</b>
Yellow LED (visible from 360°)	switching state
Standard target material	Fe360

#### Operate in accordance with intended use!

- ⚠ This product is not a safety sensor and is not intended as personnel protection.
- ⚠ The product may only be put into operation by competent persons.
- ⚠ Only use the product in accordance with the intended use.

**IS 130 MM/...**
**Inductive switches**
**Mounting**
**Embedded Mounting**

**Non-Embedded Mounting**


Tightening torque of the fastening nuts < 40 Nm !

**Sensor Types**

Type	Part No.	RANGE/MOUNTING		ELECTRICAL CONNECTION			OUTPUT				MOUNTING CLEARANCES			Standard Target Size [mm <sup>2</sup> ]		
		Sensing Range S <sub>n</sub> [mm]	Embedded	Non-Embedded	Cable 2m	M8, 3-pole	M12, 4-pole	PNP	NPN	Pin 4: Make-Contact (NO)	Pin 4: Break-Contact (NC)	Pin 2: Break-Contact (NC)	Switching Frequency f [Hz]		D1 [mm]	D2 [mm]
IS 130MM/2NO-10E	50129988	10	*	*	*				*	*	*	300	0	30	30	30 x 30
IS 130MM/2NC-10E	50129989	10	*	*	*				*	*	*	300	0	30	30	30 x 30
IS 130MM/4NO-10E	50129990	10	*	*	*				*	*	*	300	0	30	30	30 x 30
IS 130MM/4NC-10E	50129991	10	*	*	*				*	*	*	300	0	30	30	30 x 30
IS 130MM/2NO-10E-M12	50129996	10	*	*	*		*	*	*	*	*	300	0	30	30	30 x 30
IS 130MM/2NC-10E-M12	50129997	10	*	*	*		*	*	*	*	*	300	0	30	30	30 x 30
IS 130MM/4NO-10E-M12	50129998	10	*	*	*		*	*	*	*	*	300	0	30	30	30 x 30
IS 130MM/4NC-10E-M12	50129999	10	*	*	*		*	*	*	*	*	300	0	30	30	30 x 30
IS 130MM/PNC-10E-M12	50137496	10	*	*	*		*	*	*	*	*	300	0	30	30	30 x 30
IS 130MM/2NO-16E	50136058	16	*	*	*				*	*	*	300	3.5	30	30	48 x 48
IS 130MM/2NC-16E	50136059	16	*	*	*				*	*	*	300	3.5	30	30	48 x 48
IS 130MM/4NO-16E	50136060	16	*	*	*				*	*	*	300	3.5	30	30	48 x 48
IS 130MM/4NC-16E	50136061	16	*	*	*				*	*	*	300	3.5	30	30	48 x 48
IS 130MM/2NO-16E-M12	50136064	16	*	*	*		*	*	*	*	*	300	3.5	30	30	48 x 48
IS 130MM/2NC-16E-M12	50136065	16	*	*	*		*	*	*	*	*	300	3.5	30	30	48 x 48
IS 130MM/4NO-16E-M12	50136066	16	*	*	*		*	*	*	*	*	300	3.5	30	30	48 x 48
IS 130MM/4NC-16E-M12	50136067	16	*	*	*		*	*	*	*	*	300	3.5	30	30	48 x 48
IS 130MM/2NO-15N	50129992	15	*	*	*				*	*	*	300	22	60	30	45 x 45
IS 130MM/2NC-15N	50129993	15	*	*	*				*	*	*	300	22	60	30	45 x 45
IS 130MM/4NO-15N	50129994	15	*	*	*				*	*	*	300	22	60	30	45 x 45
IS 130MM/4NC-15N	50129995	15	*	*	*				*	*	*	300	22	60	30	45 x 45
IS 130MM/2NO-15N-M12	50130000	15	*	*	*		*	*	*	*	*	300	22	60	30	45 x 45
IS 130MM/2NC-15N-M12	50130001	15	*	*	*		*	*	*	*	*	300	22	60	30	45 x 45
IS 130MM/4NO-15N-M12	50130002	15	*	*	*		*	*	*	*	*	300	22	60	30	45 x 45
IS 130MM/4NC-15N-M12	50130003	15	*	*	*		*	*	*	*	*	300	22	60	30	45 x 45
IS 130MM/2NO-25N	50134108	25	*	*	*				*	*	*	300	40	60	30	75 x 75
IS 130MM/2NC-25N	50134109	25	*	*	*				*	*	*	300	40	60	30	75 x 75
IS 130MM/4NO-25N	50134106	25	*	*	*				*	*	*	300	40	60	30	75 x 75
IS 130MM/4NC-25N	50134107	25	*	*	*				*	*	*	300	40	60	30	75 x 75
IS 130MM/2NO-25N-M12	50138092	25	*	*	*		*	*	*	*	*	300	40	60	30	75 x 75
IS 130MM/2NC-25N-M12	50138091	25	*	*	*		*	*	*	*	*	300	40	60	30	75 x 75
IS 130MM/4NO-25N-M12	50138094	25	*	*	*		*	*	*	*	*	300	40	60	30	75 x 75
IS 130MM/4NC-25N-M12	50138093	25	*	*	*		*	*	*	*	*	300	40	60	30	75 x 75