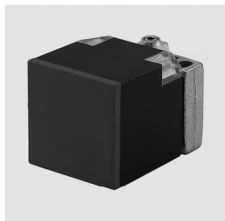
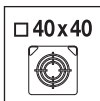
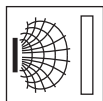


ISS 144 PP/...

Inductive switches



20mm embedded
30mm non-embedded

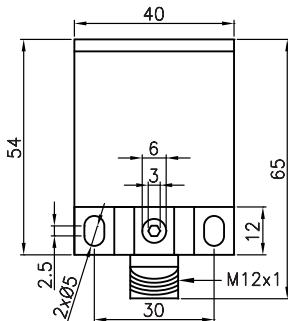


Detailed
data sheets:

www.leuze.com



Dimensioned drawing



Electrical connection

M12 connector, 4-pole

...NO... (normally open)

10-30V DC +	1	BR/BN
not connected	2	BL/BU
GND	3	SW/BK
OUT	4	

...NC... (normally closed)

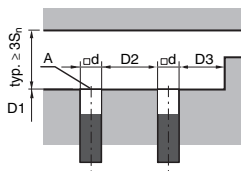
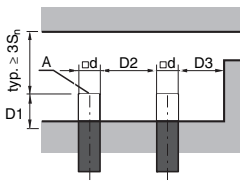
10-30V DC +	1	BR/BN
OUT	2	WS/WH
GND	3	BL/BU
not connected	4	

Specifications

Operating voltage U_B	10 ... 30VDC
Output current I_L	≤ 200 mA
Switching output/function	see Sensor Types
Switching frequency f	see Sensor Types
Yellow LED (visible from 360°)	switching state
Standard target material	Fe360

Operate in accordance with intended use!

- ⚠ This product is not a safety sensor and is not intended as personnel protection.
- ⚠ The product may only be put into operation by competent persons.
- ⚠ Only use the product in accordance with the intended use.

Mounting
Embedded Mounting

Non-Embedded Mounting

A active surface

 Tightening torque
of the fastening
screws:
< 1.8 Nm !

Sensor Types

Type	Part No.	RANGE/MOUNTING		ELECTRICAL CONNECTION			OUTPUT			MOUNTING CLEARANCES					
		Sensing Range S_n [mm]	Embedded	Non-Embedded	Cable 2m	M8, 3-pole	M12, 4-pole	PNP	NPN	Make-Contact (NO)	Break-Contact (NC)	Switching Frequency f [kHz]	D1 [mm]	D2 [mm]	D3 [mm]
ISS 144PP/2NO-20E-M12	50130004	20	*				*	*	*	*	0.3	4	80	40	60 x 60
ISS 144PP/2NC-20E-M12	50130005	20	*				*	*	*	*	0.3	4	80	40	60 x 60
ISS 144PP/4NO-20E-M12	50130006	20	*				*	*	*	*	0.3	4	80	40	60 x 60
ISS 144PP/4NC-20E-M12	50130007	20	*				*	*	*	*	0.3	4	80	40	60 x 60
ISS 144PP/2NO-30N-M12	50130008	30		*			*	*	*	*	0.1	40	120	60	90 x 90
ISS 144PP/2NC-30N-M12	50130009	30		*			*	*	*	*	0.1	40	120	60	90 x 90
ISS 144PP/4NO-30N-M12	50130010	30		*			*	*	*	*	0.1	40	120	60	90 x 90
ISS 144PP/4NC-30N-M12	50130011	30		*			*	*	*	*	0.1	40	120	60	90 x 90